

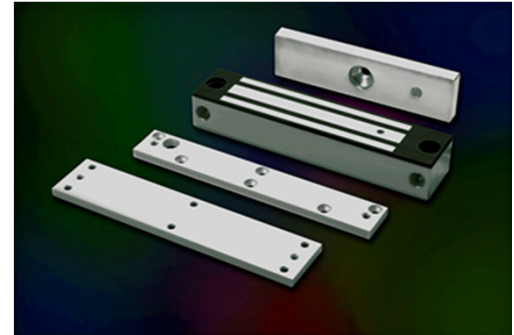
EXT Series

300lbs Water Proof Electromagnetic Lock

Model **EXT135-SL-A (Monitored Version)**

DESCRIPTION

300lbs Water Proof EM locks were designed as such to be unaffected / resisting the ingress of water under specified condition with its fully sealed electronics incased with stainless steel. Suitable for outdoor application and harsh climate.



FEATURES & SPECIFICATION



Life Safety Applications



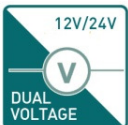
Zero Residual Magnetism



Low Energy Consumption



Cost Savings

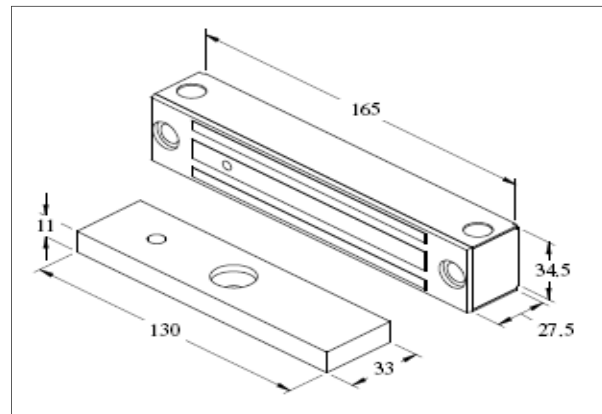


12/24Vdc Selectable



Fully Sealed Electronics

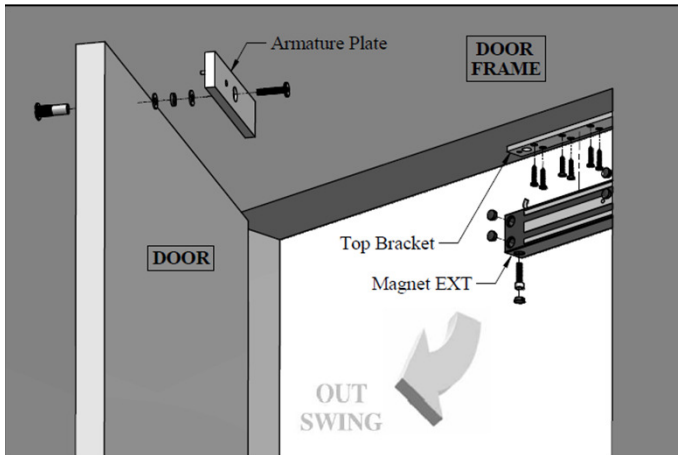
Model	EXT135-SL-A
Features & Spec.	
Lock Status Monitoring	Reed Switch
Holding Force	Up to 300lbs
Magnet Size	165 X 34.5 X 27.5 mm
Armature Size	130 X 33 X 11 mm
Current Drain	300mA±10%/12Vdc 150mA±10%/24Vdc
Operating Temperature	(-10 to 55) °C (14 to 131) °F
Housing Finishing	Stainless Steel Housing
Est. Weight	1.5kg



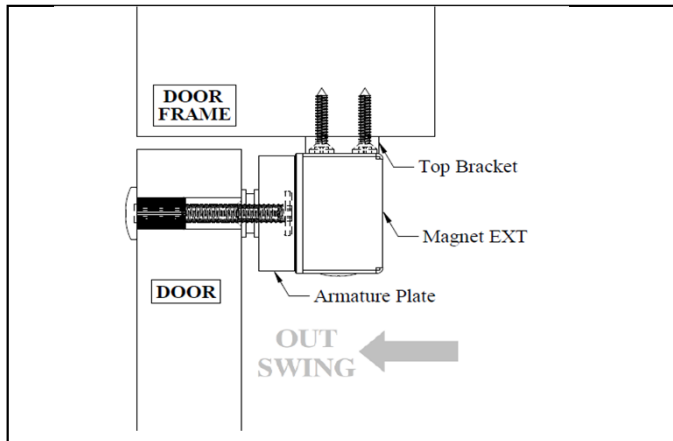
EXT Series

300lbs Water Proof Electromagnetic Lock

STANDARD INSTALLATION DIAGRAM

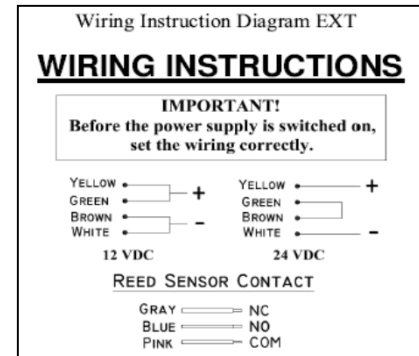


Explode View



Side View

WIRING DIAGRAM



OPTIONAL - BRACKET SELECTION

LS-EXT135	Z-135
-----------	-------