

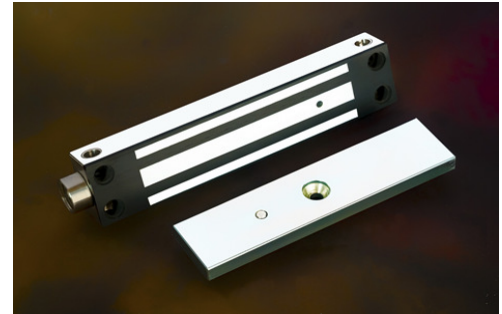
# EXT Series

## 800lbs Water Proof Electromagnetic Lock

Model EXT325-SLCF-A (Monitored Version)

### DESCRIPTION

800lbs Water Proof EM locks were designed as such to be unaffected / resisting the ingress of water under specified condition with its fully sealed electronics incased with stainless steel. This EM Lock series is fitted with cable female. Suitable for outdoor application and harsh climate.



### FEATURES & SPECIFICATION



**Life Safety Applications**



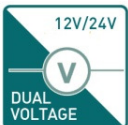
**Zero Residual Magnetism**



**Low Energy Consumption**



**Cost Savings**

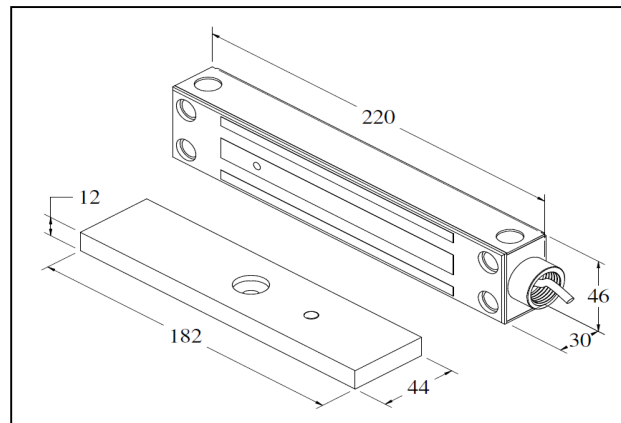


**12/24Vdc Selectable**



**Fully Sealed Electronics**

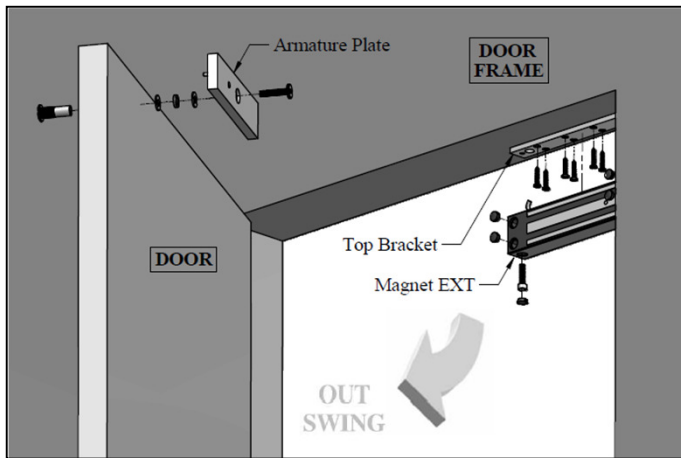
Model	EXT325-SLCF-A
<b>Features &amp; Spec.</b>	
<b>Lock Status Monitoring</b>	Reed Switch
<b>Holding Force</b>	Up to 800lbs
<b>Magnet Size</b>	220 X 46 X 30 mm
<b>Armature Size</b>	182 X 44 X 12 mm
<b>Current Drain</b>	460mA±10%/12Vdc 230mA±10%/24Vdc
<b>Operating Temperature</b>	(-10 to 55) °C (14 to 131) °F
<b>Housing Finishing</b>	Stainless Steel Housing
<b>Est. Weight</b>	2.6kg



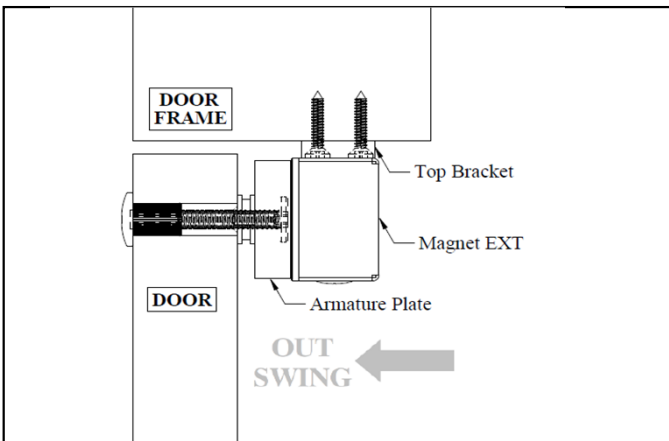
# EXT Series

## 800lbs Water Proof Electromagnetic Lock

### STANDARD INSTALLATION DIAGRAM



Explode View



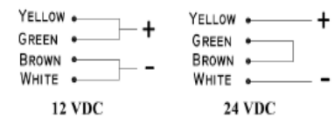
Side View

### WIRING DIAGRAM

Wiring Instruction Diagram EXT

#### WIRING INSTRUCTIONS

**IMPORTANT!**  
Before the power supply is switched on,  
set the wiring correctly.



#### REED SENSOR CONTACT



### OPTIONAL - BRACKET SELECTION

LS-EXT325	Z-325
-----------	-------