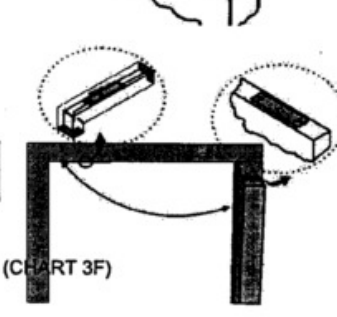
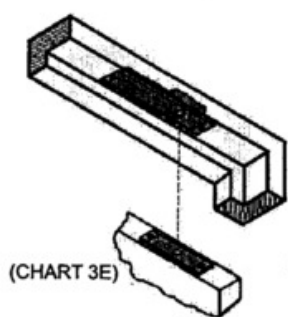
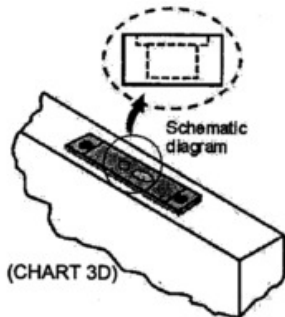
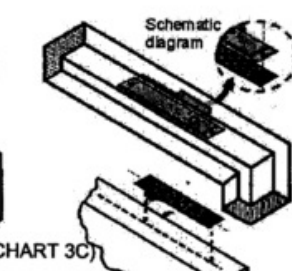
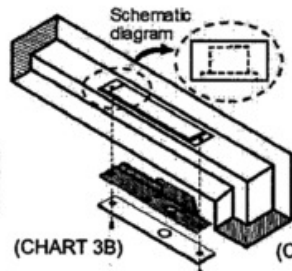
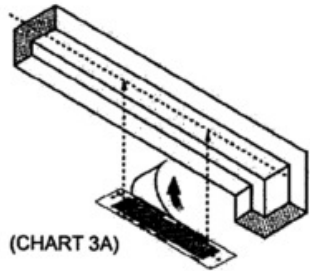
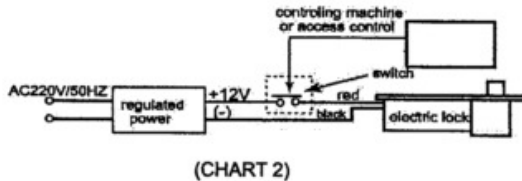
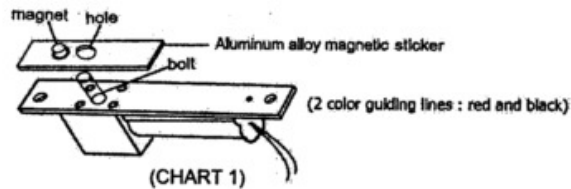


# Electric Dropbolt Installation Instruction



## 1. Function:

This kind of lock is fail-safe, locked when energized and operates with DC 12V (Chart 1).

## 2. Instruction :

- A. Please read this instruction carefully before using it, and check the accessories enough or not. Please make a test before installing.
- B. The lock was combined by two parts :
  - I. Aluminum alloy magnetic strike plate.
  - II. Body. The gap between the strike plate and the front of lock should be less than 5mm, and the hole of the strike plate must right to the bolt. The magnet must be set in the middle of the sticker.
- C. 2 lines in the rear of the lock for connection, such as red for power (+) connecting DC12V and black for power (-) (chart 1).
- D. Circuit connection (chart 2) : the power for the lock must reach to DC 12V.
- E. Installation. (Please refer "With Bracket" if using bracket for installation).
  - I. Make sure the door is closed properly. Then decide the center line and mark on the door frame and door leaf. Keep the center line of tab and door frame aligned, and then attach the tab on it after that drill holes on the corresponding location (chart 3A).
  - II. Fix the electric bolt lock and the decoration face plate on the door frame based on the holes (chart 3B).
  - III. Decide the center line according to the door, bolt lock and latch bolt. Then attach tabs on the door and then drill holes on corresponding strike plate (chart 3C).
  - IV. Fix the strike plate on the door leaf with screws (chart 3D).
  - V. Keep latch bolt center line and center line of strike plate bolt holes aligned (chart 3E).
  - VI. Installation is finished. A universal wooden installation template is shown beside (chart 3F).

## 3. Precautions :

- A. Please keep it away from moist and water when install or use the electric lock.
- B. Installation shall be conducted according to the User Manual and the installation procedures. Cut off the power during installation and wiring. Do not carry out wiring with power connected.
- C. Select qualified power source and wires to avoid out service of the lock due to abnormal power supply. it is recommended to connect the lock to the power source.
- D. Make sure the installation position is proper and firm. Otherwise, the bolt will lock improperly and the lock will produce heat, leading to shortening of lock service life.
- E. If the lock fails to work after the power is connected, check whether the permanent magnet is aligned to the magnetic induction field and check connection correctness of the electric circuit and power source. If the multimeter is used to measure the load, make sure that voltage at lock power input shall not be less than 12VDC.