

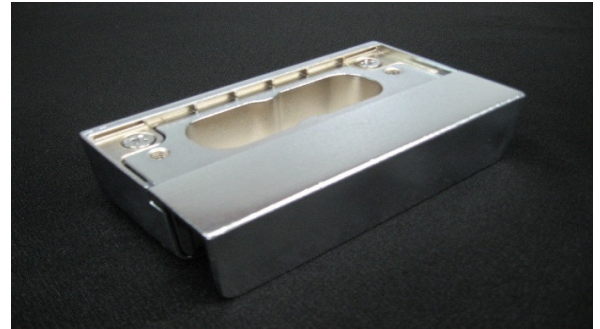
Bracket - Electric Dropbolt

Bracket G-EDB100-TC

Model G-EDB100-TC

APPLICATION

Applicable for drop-bolt on frameless glass door.
For installation of the gusset plate.
For 12-15mm thick frameless glass doors.



SPECIFICATION

| Features & Spec. | Models | Bracket G-EDB100-TC |
|------------------|--------|------------------------------|
| Dimension | | 103 (L) x 58 (W) x 30 (H) mm |
| Weight | | 0.29 kg |